

Morphologie du caractère typographique



Anatomie du caractère typographique (Georgia par Matthew Carter, 1993 — 180 pt)

Structure/Construction

A B C D E F G H I J K L M N O P Q

Capitale

R S T U V W X Y Z

A B C D E F G H I J K L M N O P Q

Petite capitale

R S T U V W X Y Z

a b c d e f g h i j k l m n o p q

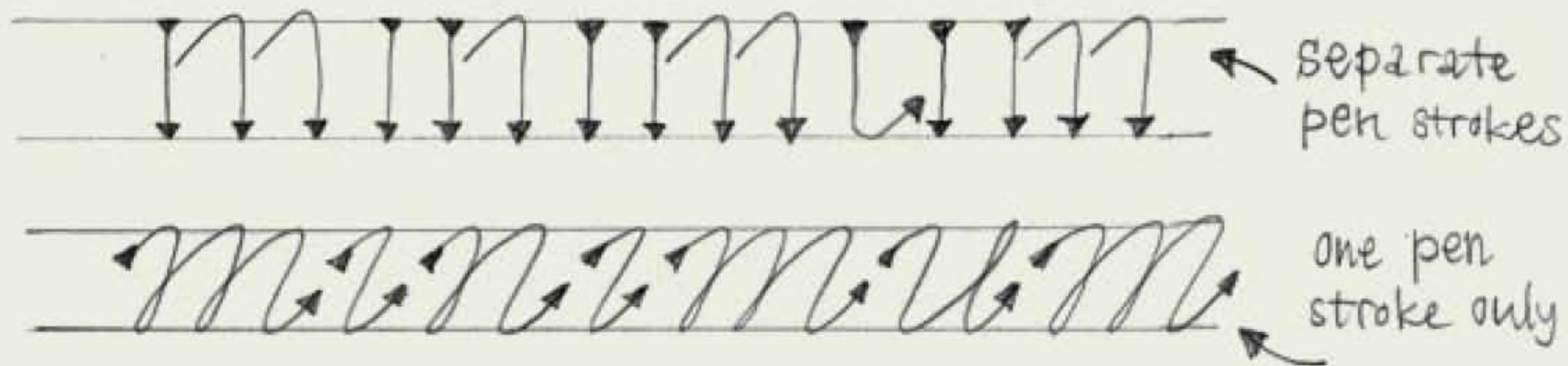
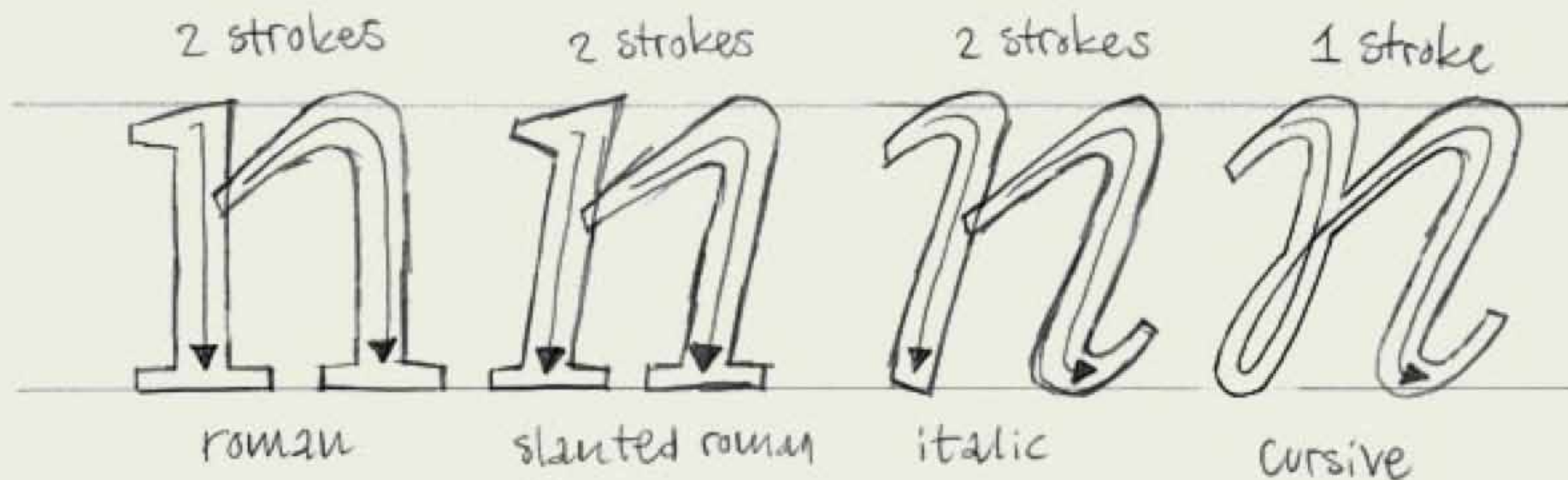
Bas de casse

r s t u v w x y z

a b c d e f g h i j k l m n o p q

Romain/Italique

r s t u v w x y z



Hamburgetfontshiv

Hamburgetfontshiv

Hamburgetfontsv

Hamburgetfontsv

Hamburgetfontsi

Hamburgetfontsi

Hamburgetfontsi

Hamburgetfontsi

Corps

A p d



1 point = 0,353 mm

36 pt = 12,7 mm

Chasse

nmi

National

nmi

Courier > monochasse

Typo

compressé

Typo

étroit / condensé

Typo

normal

Typo

étendu

Graisse

maigre

gras



thin

light

book

regular

medium

bold

black

THIN fugitasite volo eum quunt di id molorerciae vit volupta
tianditas sequas aliquae qui te et oditam quas minctatem rem. Nam el
int, invernā aut et estis excea sum ne si cor rem faccaes doluptaqui
doluptasim quosaperum rem alicia inctum nem volendae ped
quossunt.

Tius reped quatem volorum volorep elestempost et ommo magnatus
es as ut quam inci unt odi quibus quiatem. Bist rerume ped quam
non excepud ipsanda dolloriate voluptiori sersperum volor magni
atquam quia et qui sequae voluptatur?

Tio to id et que con nonsectento est acea autem facerferi sed
maxima nobit fugit ut arum impore, eicium qui ime denis vellore
laccat hario. Aperferati dolorum eium sitat volendae aut


**BOLD Nam fugitasite volo eum quunt di id molorerciae
vit volupta tianditas sequas aliquae qui te et oditam
quas minctatem rem. Nam el int, invernā aut et estis
excea sum ne si cor rem faccaes doluptaqui doluptasim
quosaperum rem alicia inctum nem volendae ped
quossunt.**

**Tius reped quatem volorum volorep elestempost et ommo
magnatus es as ut quam inci unt odi quibus quiatem.
Bist rerume ped quam non excepud ipsanda dolloriate
voluptiori sersperum volor magni atquam quia et qui
sequae voluptatur?**

Tio to id et que con nonsectento est acea autem facerferi

Contraste

are



are

Type de contraste



Deux types de contraste : expansion et translation

Terminaisons

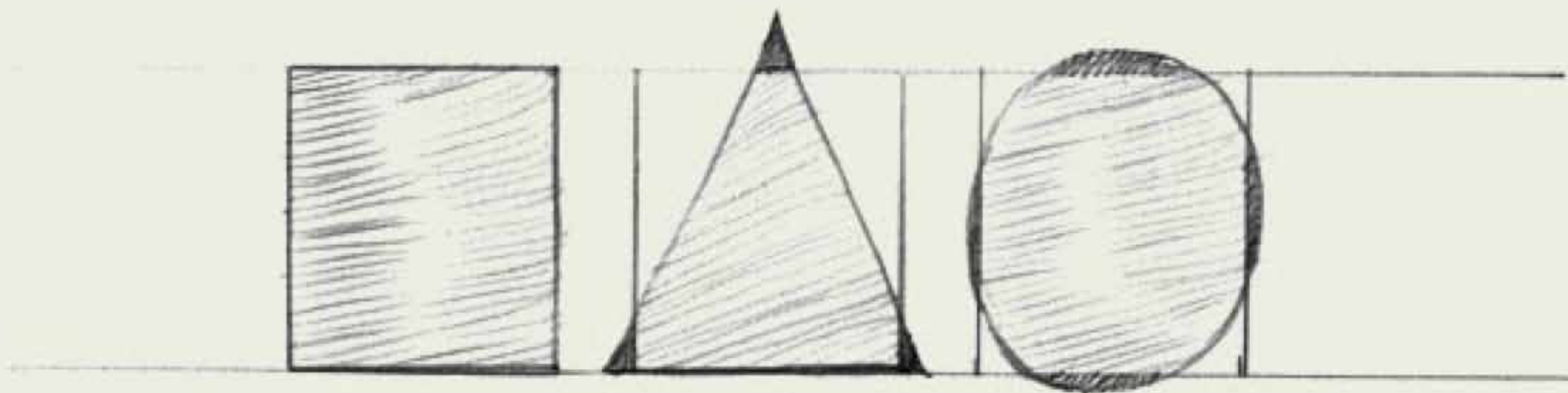
Typographie

serif / avec empattement

Typographie

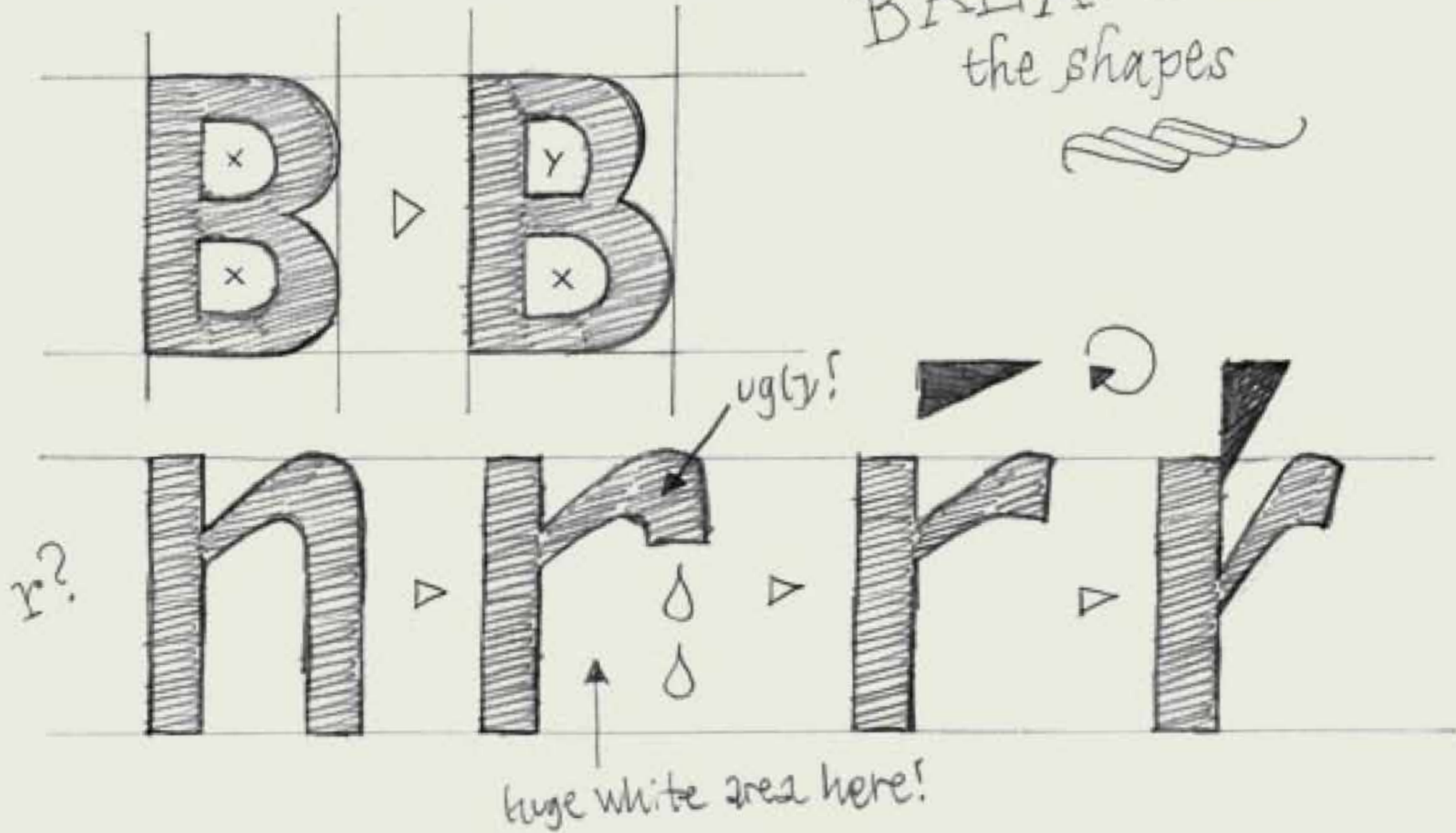
sans serif / sans empattement

Mise en application

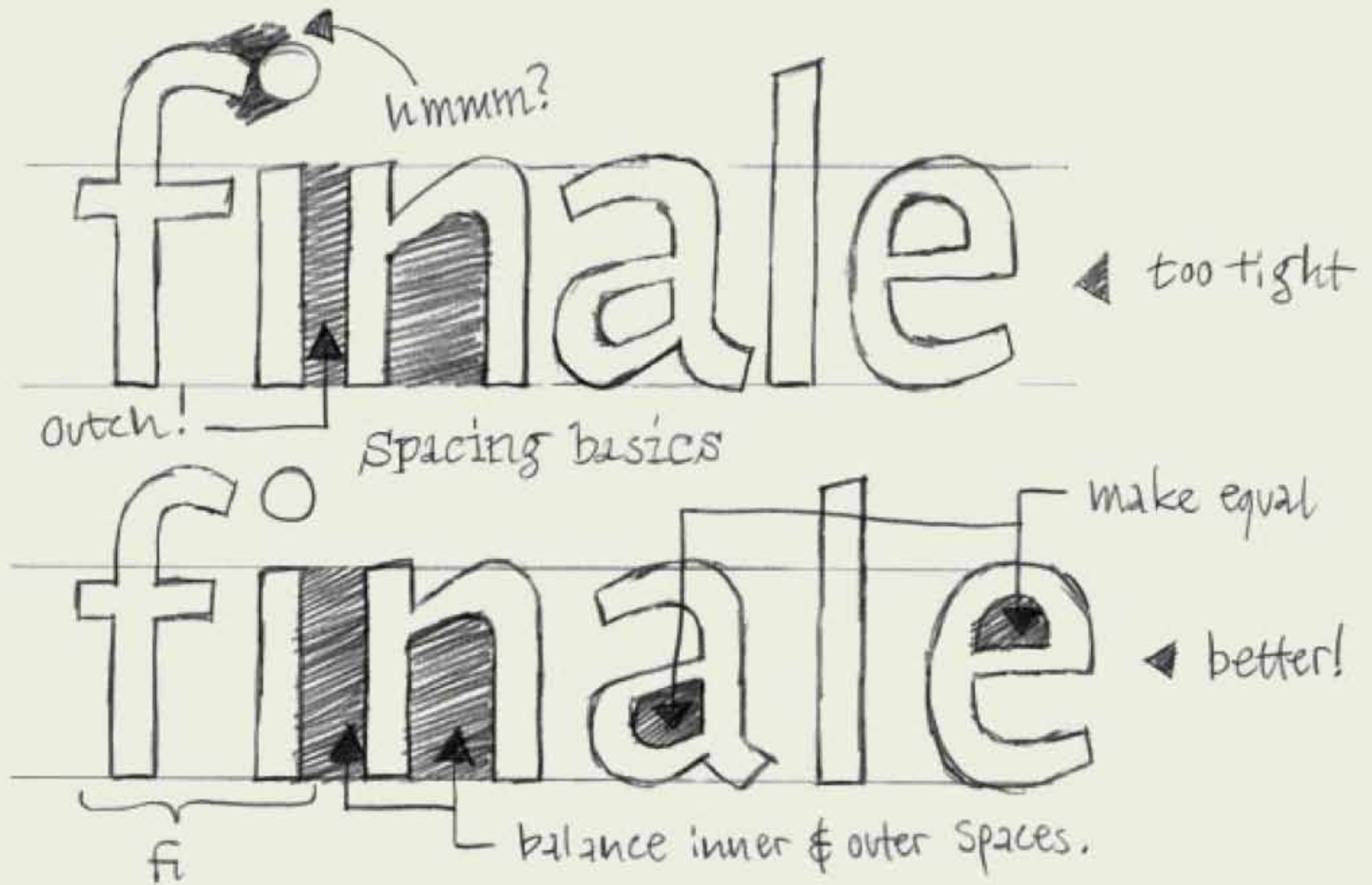


Corrections optiques : overshoot et undershoot

BALANCE
the shapes



Équilibrer les formes et les contreformes



nn
hu
m
ri
tflj

o o
e
c
bp
dqg

n
a
s
k
z

n
v
w
y
x

Univers Roman 55
Adrian Frutiger, 1957

H O C Q

N I J

M V A A

W

D L

G B P R E F K H A X Y

H H

U

S

T

V